

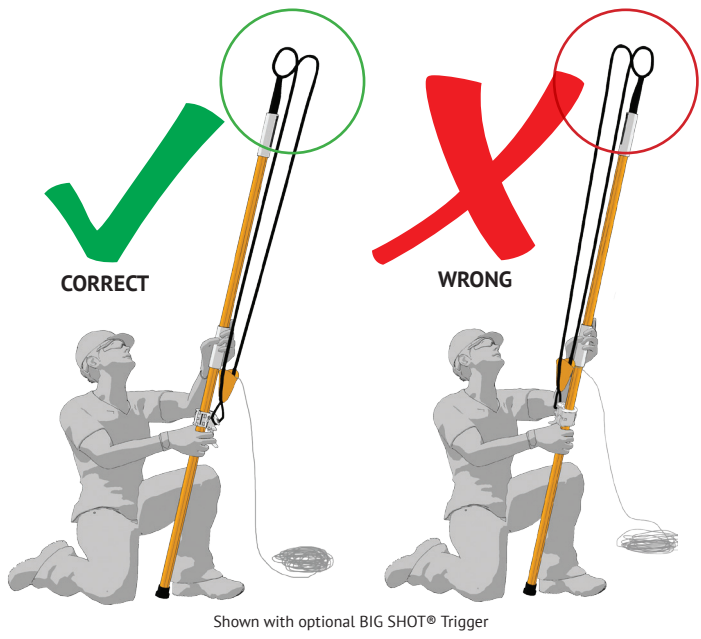


BIG SHOT®

BIG SHOT TRIGGER®

WARNING!

The BIG SHOT® projectile pouch and elastic straps must be turned AWAY from the operator, facing the intended target with base pole firmly positioned on the ground during operation. **DO NOT** use in any alternative orientation.



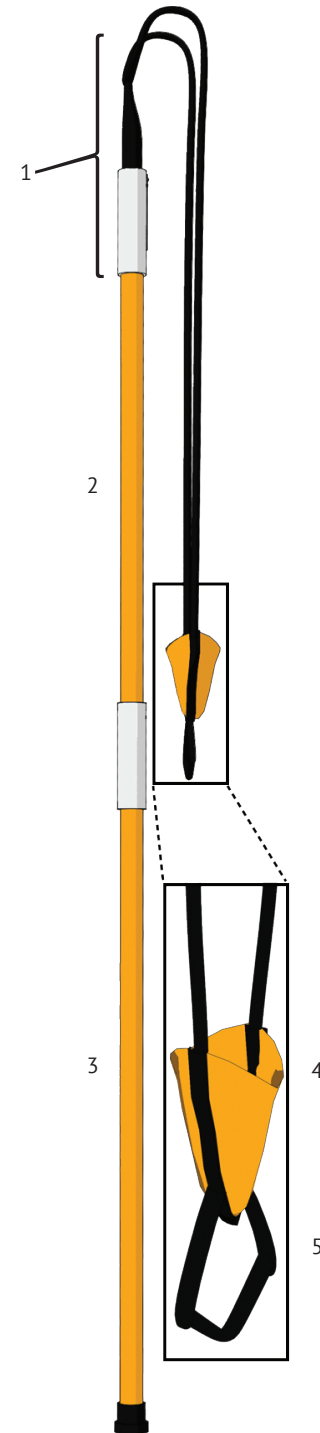
USAGE

The BIG SHOT® head can only be used with inspected and undamaged 1.25" diameter utility grade fiberglass extension poles. DO NOT attempt to use this product on any other type of host pole. The BIG SHOT® pouch was designed to work with an arborist style throw weight, use of any alternative projectiles is strictly prohibited. Operator must wear proper safety equipment including helmet and safety glasses.

The BIG SHOT® is designed for line setting use only and should NOT be used for any alternative purpose.

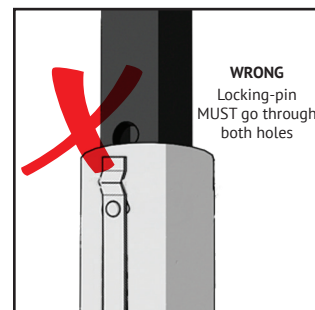
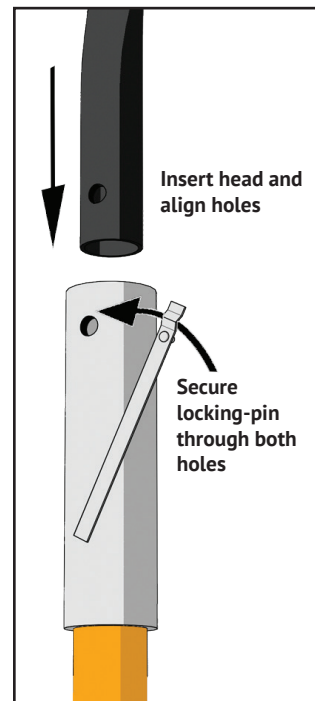
NOMENCLATURE OF PARTS

- (1) BIG SHOT® Head
- (2) Top Pole
- (3) Base Pole
- (4) Projectile Pouch
- (5) Webbing Loop



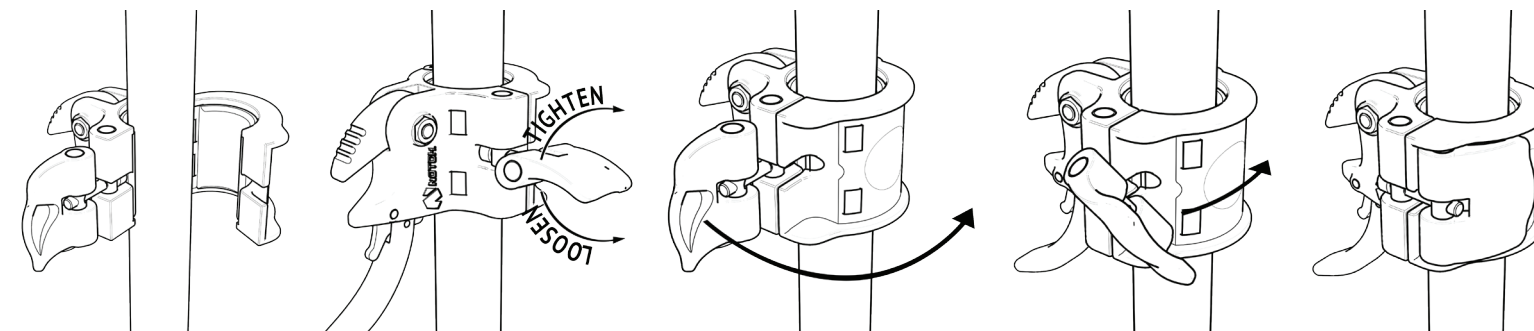
LAUNCHING INSTRUCTIONS

- Install BIG SHOT® Head (1) onto the fiberglass Top Pole (2) by inserting head into the female ferrule. Secure head by aligning the two holes and fully engaging the spring-loaded pin (See illustration below).
- If using multiple poles, connect Top Pole (2) to the Base Pole (3), secure ferrules with spring-loaded pin. Caution: spring-loaded pin is under high tension.
- Prepare throwline by flaking it out on suitable surface such as tarp, throwline cube, bag, or bucket. Ensure the throwline is untangled and free of any obstacles which may cause the throwline to snag during deployment.
- Attach throwline to the ring of the throw bag using the termination of your choice.
- Evaluate target zone for hazards. If people or valuable property are noted in the immediate area, DO NOT LAUNCH until they have been relocated a safe distance away from the area. Prior to launching, provide a loud audible warning to alert any bystanders.
- Place the throw weight into the Projectile Pouch (4). Ensure the weight is centered and balanced inside the pouch. The metal ring should be facing out of the pouch for successful launch and optimal distance. Use of any alternative projectile is not recommended.
- Grasp Webbing Loop (5) with index and middle finger. Using safe launching position (see warning illustration above) pull down along the pole to desired length, aim, and release the loop.



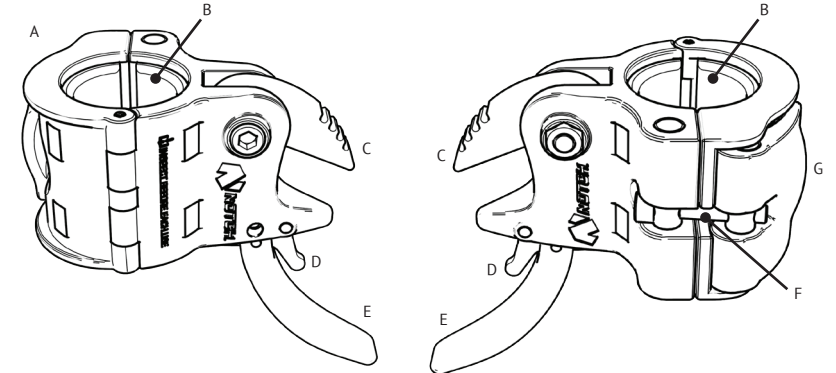
TRIGGER INSTALLATION

- Note: Initial location of the Notch Trigger will vary depending on user's preference.
- Inspect the Trigger for any wear prior to each installation and use.
- Open the Quick Release Cam Lever (G).
- Position the Trigger around the Base Pole (3) ensuring the Release Lever (E) is pointing opposite the Head (1).
- Close the Main Housing (A) by returning the Quick Release Cam Lever (G) to resting position, then press down to lock lever.
- If necessary to increase or decrease tension, open the Quick Release Cam Lever (G) and rotate the Tension Bolt (F) clockwise or counter-clockwise to tighten or loosen.
- To relocate the trigger, open the Quick Release Cam Lever (G) and push down or pull up on the Main Housing (A) to desired position.



TRIGGER NOMENCLATURE

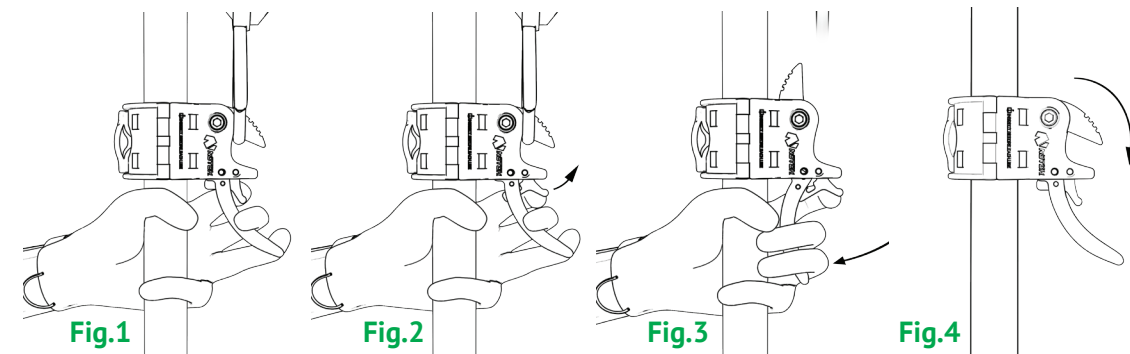
- (A) Main Housing
- (B) Rubber Spacers
- (C) Catch
- (D) Safety Latch
- (E) Release Lever
- (F) Tension Bolt
- (G) Quick Release Cam Lever



TRIGGER OPERATION

These instructions are different from standard BIG SHOT® operating instructions. Please read carefully.

- Read all warning instructions and inspect the trigger for any wear prior to each use.
- Secure the Webbing Loop (5) on the Catch (C). Fig.1
- Load throw weight into Projectile Pouch (4) (refer to regular BIG SHOT® launching instructions).
- Push up on the Safety Latch (D). Fig.2
- Ensure the Trigger and BIG SHOT® are on the opposite side of the pole from your body.
- Pull down on the Release Lever (E) to release the projectile. Fig.3
- Return Trigger to priming position. Fig.4



REPLACING RUBBER INSERTS

- Disconnect Trigger from fiberglass pole.
- Open Trigger to access both Rubber Spacers (B).
- Remove Rubber Spacers by pulling away from Main Housing (A).
- Press new Rubber Spacers inside housing cavities.
- Inserts are black in color; they're shown here in green for illustrative purposes only.

