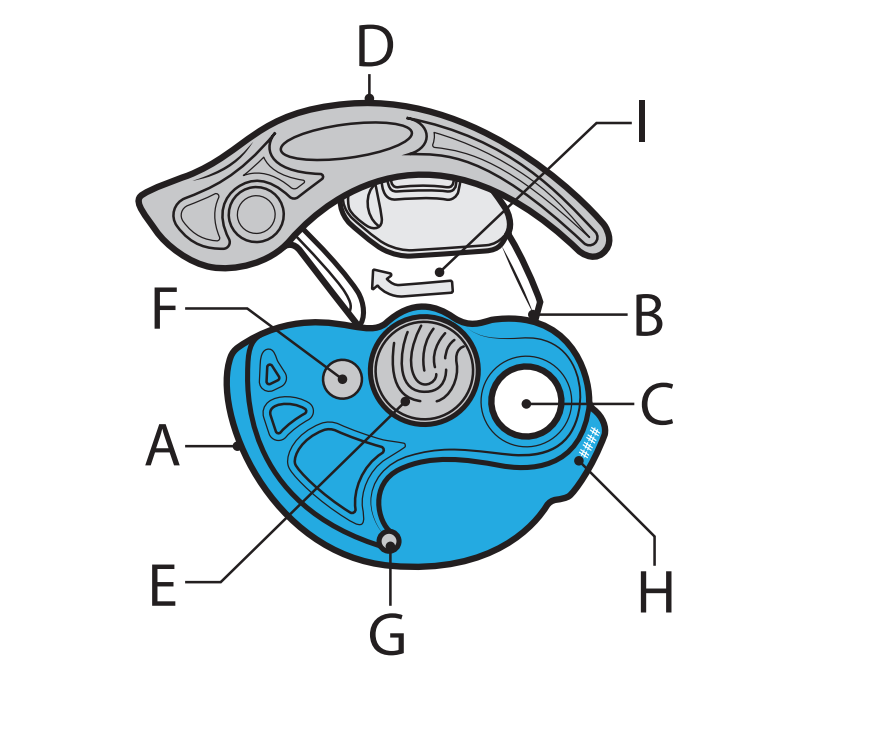


**Video instructions at [Trango.com](http://Trango.com)**

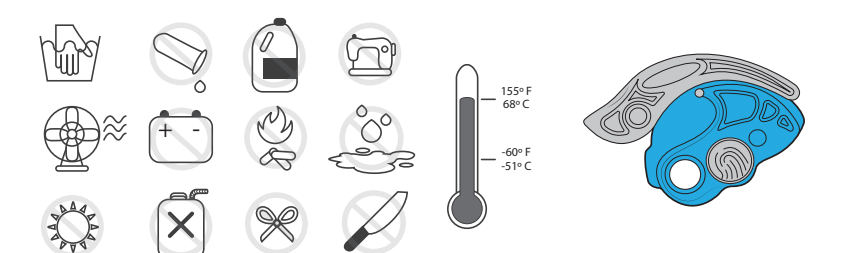
Classification: Type 6 Braking Device  
EN 15151-1:2012  
Assembled in USA of US and Foreign parts  
Notified body responsible for certification and conformity:  
CE 0321 SATRA Technology  
No. 3859296 Windham Way, Telford Way,  
Kettering, Northamptonshire, NN16 8SD,  
United Kingdom

Manufacturer:  
Trango  
1215 Distel Dr., Lafayette, CO 80026 USA

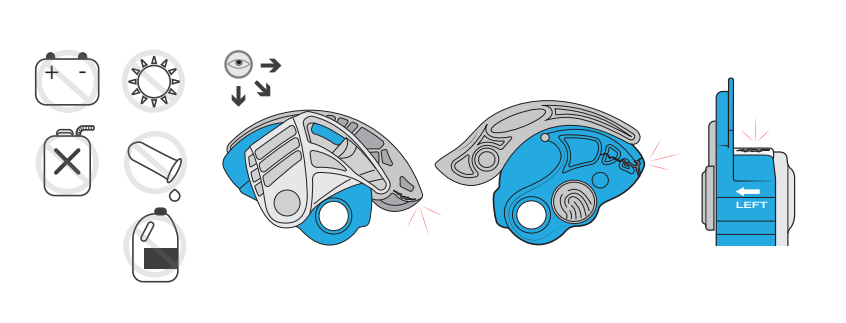
**Terminology of Verigo parts**  
Bezeichnung der Verigo-Bauteile | Terminología de las partes del Verigo | Terminologie des différentes pièces du Verigo | Nome delle componenti del Verigo | Verigo 部品の用語



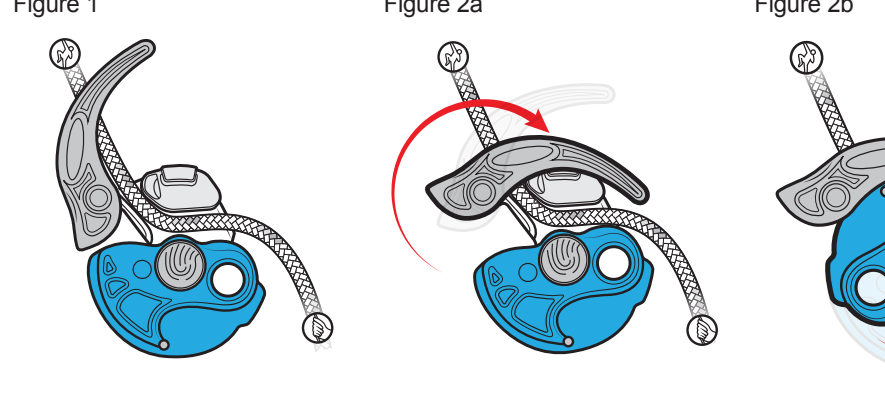
**Storage and Care**  
Pflege und Lagerung | Cuidados y Almacenamiento | Entretien et rangement | Cura e Conservazione | お手入れおよび保管



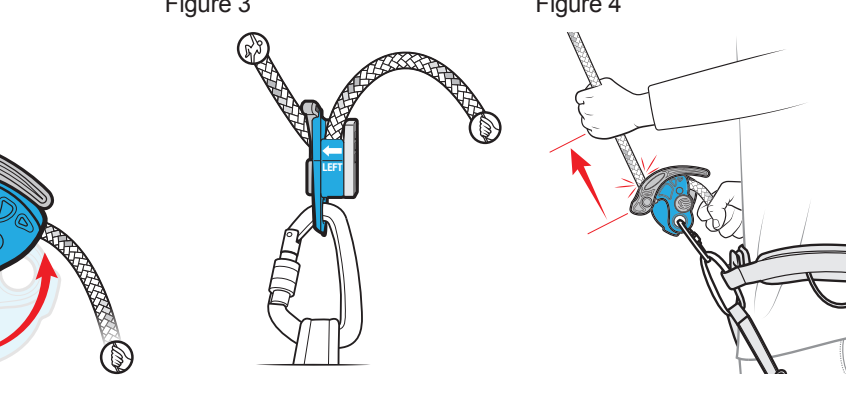
**Inspection**  
Überprüfung | Inspección | Inspection | Ispezione | 点検



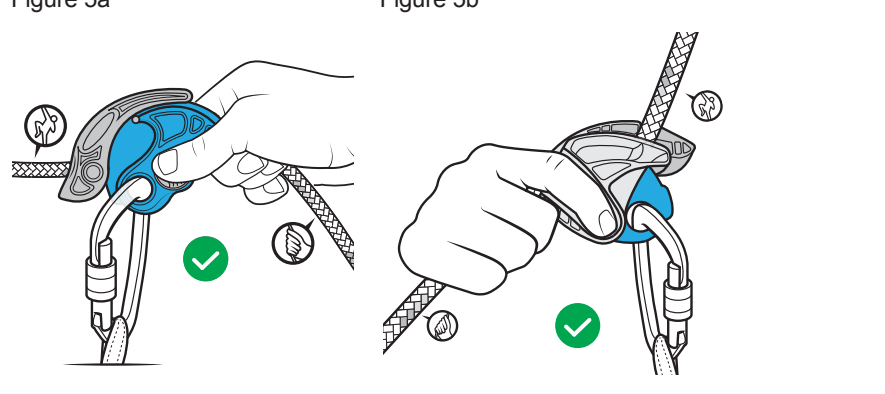
**Loading**  
Einlegen des Seils | Cargar | Charger | Installare | を装着する



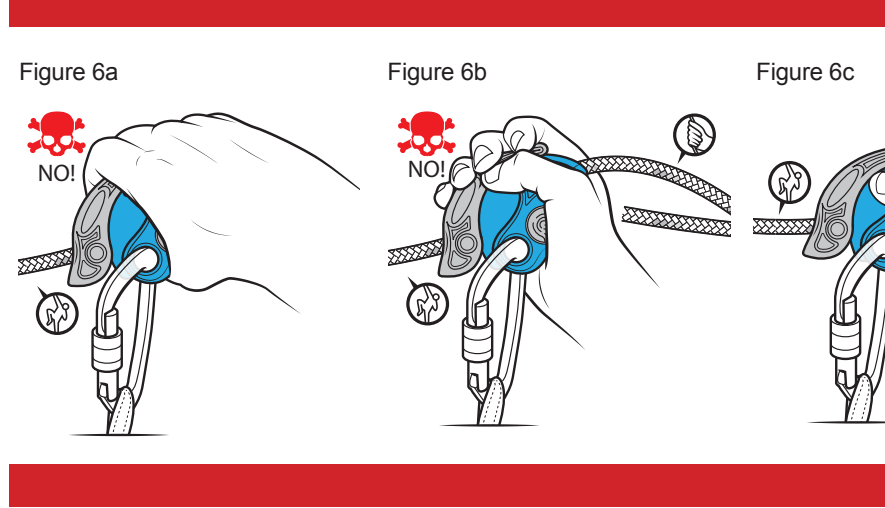
**WARNING!**  
It is the user's responsibility to read and fully understand these instructions and illustrations before using the VERIGO.



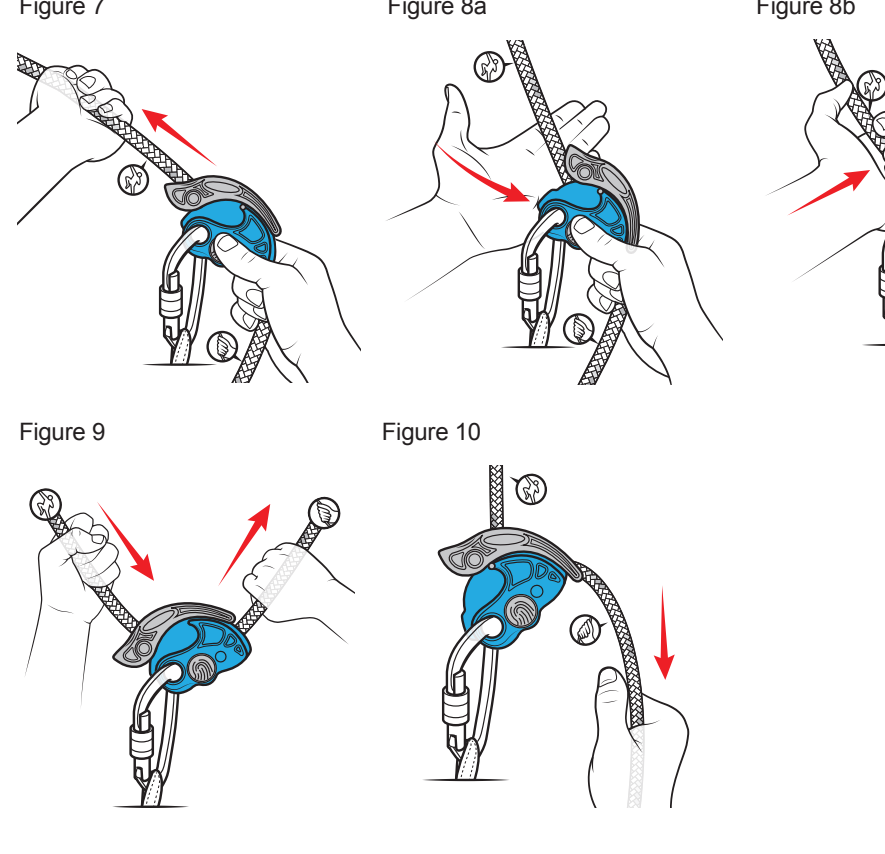
**Belaying**  
Sichern | Sujeción | Assurer | Assicurarsi | による安全確保 (保レイ)



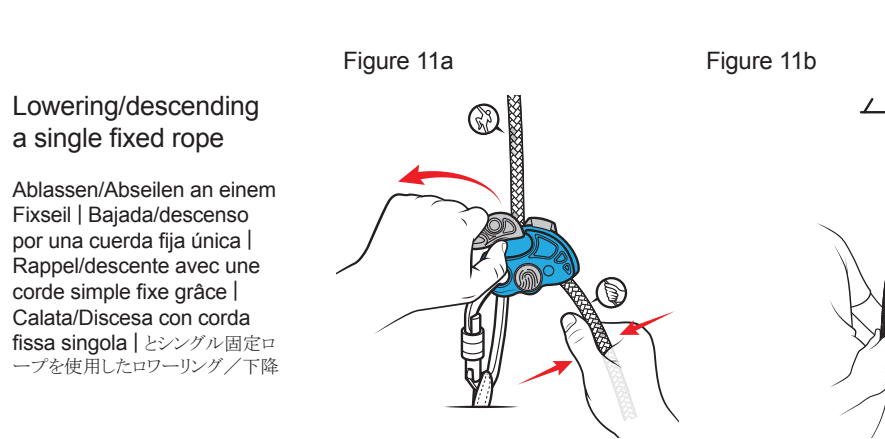
**WARNING!**  
The VERIGO will not engage or brake the rope if the VERIGO is held open or disengaged by the belayer. NEVER REMOVE YOUR BRAKE-HAND FROM BRAKE SIDE OF THE ROPE.



**WARNING!**  
The VERIGO will not engage or brake the rope if the VERIGO is held open or disengaged by the belayer. NEVER REMOVE YOUR BRAKE-HAND FROM BRAKE SIDE OF THE ROPE.



**WARNING!**  
The VERIGO will not engage or brake the rope if the VERIGO is held open or disengaged by the belayer. NEVER REMOVE YOUR BRAKE-HAND FROM BRAKE SIDE OF THE ROPE.



**WARNING!**  
The VERIGO will not engage or brake the rope if the VERIGO is held open or disengaged by the belayer. NEVER REMOVE YOUR BRAKE-HAND FROM BRAKE SIDE OF THE ROPE.

**VERGO INSTRUCTIONS**  
**WARNING!**  
It is the user's responsibility to read and fully understand these instructions and illustrations before using the VERIGO.

The VERGO is designed for rock climbing use only. Climbing is an inherently dangerous activity that can result in serious injury or death. The VERGO is intended for use only by competent and responsible climbers who know how to belay properly. THESE INSTRUCTIONS DO NOT AND ARE NOT INTENDED TO TEACH YOU HOW TO CLIMB, BELAY, OR DESCEND. Competence and a thorough knowledge of climbing, belaying, and descending techniques are required before using the VERGO.

**TERMINOLOGY OF VERGO PARTS:**  
A. Front Plate | B. Rear Plate | C. Carabiner Hole | D. Lowering Handle | E. Thumb Pad | F. Friction Pin | G. Cam Pin | H. Lot Number | I. Rope Channel

**LOADING THE VERGO**  
**Figure 1:** Open the VERGO and load the rope as shown.  
**Figure 2a-b:** Close the VERGO as shown.  
**Figure 3:** Clip a locking carabiner through the Carabiner Hole and through the belay loop of your harness and lock the carabiner. Always attach the VERGO in the orientation shown in Fig. 3.

**BELAYING WITH THE VERGO**  
**Figure 5a-b:** Hold the VERGO with your right hand as shown (Fig. 5a). Your index finger should lay in the finger groove on the Back Plate (Fig. 5b) and your thumb should sit on the Thumb Pad. Your remaining three fingers should wrap around the brake side of the rope.  
**Figure 6a-e:** IMPORTANT: Your right hand should not touch the Front Plate in any way that could hold the device open by preventing the Front and/or Rear Plates from moving freely. Do NOT override the assisted-braking mechanism to feed slack quickly. DO NOT GRIP THE VERGO with your entire hand. Do not take your hand off the brake strand of the rope. Some examples of incorrect usage are shown in figures 6a-6e, but this set of examples is not exhaustive.

**WARNING!**  
The VERIGO will not engage or brake the rope if the VERIGO is held open or disengaged by the belayer. NEVER REMOVE YOUR BRAKE-HAND FROM BRAKE SIDE OF THE ROPE.

**WARNING!**  
The VERIGO will not engage or brake the rope if the VERIGO is held open or disengaged by the belayer. NEVER REMOVE YOUR BRAKE-HAND FROM BRAKE SIDE OF THE ROPE.

**WARNING!**  
The VERIGO will not engage or brake the rope if the VERIGO is held open or disengaged by the belayer. NEVER REMOVE YOUR BRAKE-HAND FROM BRAKE SIDE OF THE ROPE.

VERGO sind detaillierte Kenntnisse von Kletter-, Sicherheits- und Absstecktechniken erforderlich. Eine sachgemäße Einweisung vor der Verwendung des VERGO ist unerlässlich. STELLEN SIE SICHER, DASS SIE VOR DEM SICHERN EINER SICHERE PARTNER MIT DEM VERIGO DIESE ANLEITUNG UND ABILDUNGEN VOLLSTÄNDIG DURCHLESEN UND VERSTEHEN. DIE ERFORDERLICHE HANDHABUNG IN EINER SICHEREN UMGEBUNG ÜBEN UND BEHERRSCHEN SOWIE DIE EIN-SCHRÄNKUNGEN UND MÖGLICHKEITEN DES VERGO VOLLIG VERSTEHEN.

SIE SIND ALLEIN FÜR DEN ORDNUNGSGEMÄßEN GEBRAUCH DES VERGO VERANTWORTLICH. DIE NICHT ORDNUNGSGEMÄßE ANWENDUNG DIESES PRODUKTS KANN ZU SCHWEREN VERLETZUNGEN ODER ZUM TOD FÜHREN. DURCH DEN KAUF UND DIE VERWENDUNG DIESES PRODUKTS ÜBERNIMMT DER BENUTZER PERSÖNLICH DIE VOLLE VERANTWORTUNG UND DAS RISIKO, DASS DIE UNSACHGEMÄßE VERWENDUNG DES PRODUKTS FÜR SICH SELBST UND ANDERE SCHWERE VERLETZUNGEN UND DEN TOD ZUR FOLGE HABEN KÖNNEN.

**BEZEICHNUNG DER VERGO-BAUTEILE:**  
A. Frontplatte | B. Rückplatte | C. Karabineröse | D. Ablasshebel | E. Daumenablage  
F. Reibnocken | G. Reibachse | H. Chargennummer | I. Seilkanal

**BEZIEHNUNG DER VERGO-BAUTEILE:**  
A. Frontplatte | B. Rückplatte | C. Karabineröse | D. Ablasshebel | E. Daumenablage  
F. Reibnocken | G. Reibachse | H. Chargennummer | I. Seilkanal

**BEZIEHNUNG DER VERGO-BAUTEILE:**  
A. Frontplatte | B. Rückplatte | C. Karabineröse | D. Ablasshebel | E. Daumenablage  
F. Reibnocken | G. Reibachse | H. Chargennummer | I. Seilkanal

**BEZIEHNUNG DER VERGO-BAUTEILE:**  
A. Frontplatte | B. Rückplatte | C. Karabineröse | D. Ablasshebel | E. Daumenablage  
F. Reibnocken | G. Reibachse | H. Chargennummer | I. Seilkanal

**BEZIEHNUNG DER VERGO-BAUTEILE:**  
A. Frontplatte | B. Rückplatte | C. Karabineröse | D. Ablasshebel | E. Daumenablage  
F. Reibnocken | G. Reibachse | H. Chargennummer | I. Seilkanal

**BEZIEHNUNG DER VERGO-BAUTEILE:**  
A. Frontplatte | B. Rückplatte | C. Karabineröse | D. Ablasshebel | E. Daumenablage  
F. Reibnocken | G. Reibachse | H. Chargennummer | I. Seilkanal