

DMM IMPACT BLOCKS

A BIG IMPACT



DMM
PROFESSIONAL

FOR MORE INFORMATION CONTACT DMM:

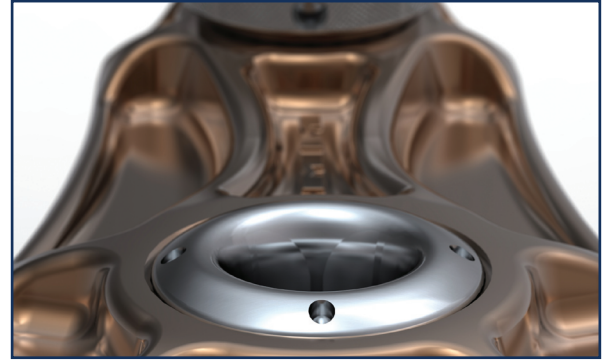
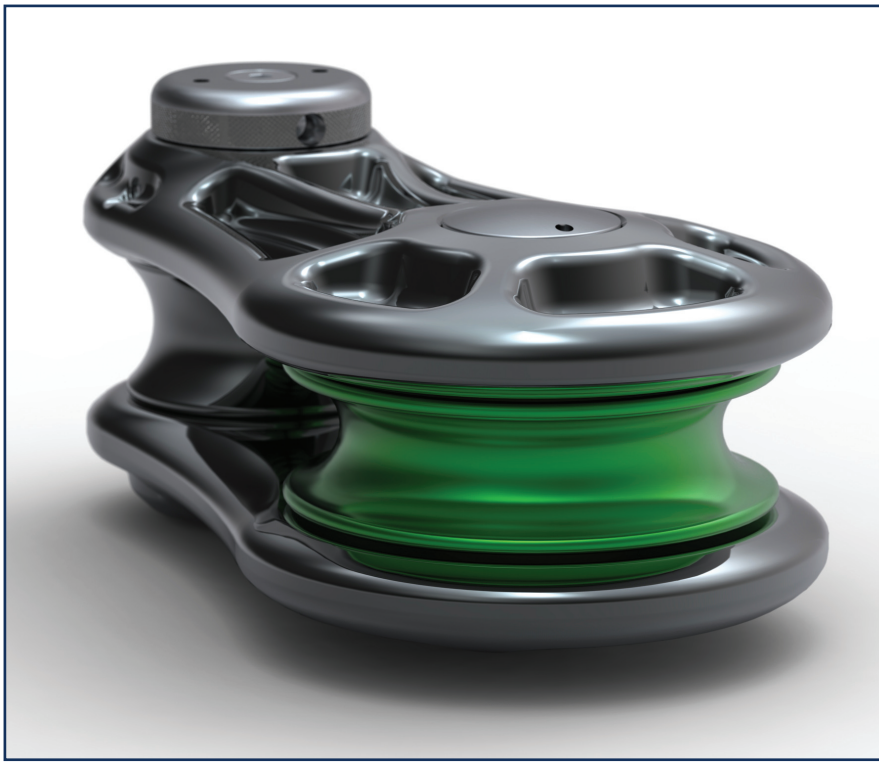
**LLANBERIS, GWYNEDD, WALES
UNITED KINGDOM LL55 4EL**

TEL: +44 [0]1286 873 502

FAX: +44 [0]1286 872 090

EMAIL: PROFESSIONAL@DMMWALES.COM

WWW.DMMWALES.COM



DMM IMPACT BLOCKS

Designed for use in the tree care industry when loads may be dropped into rigging with considerable impact forces.

The combination of high quality materials and advanced production processes has ensured a rope friendly, durable and robust product. During design each Impact Block has gone through a thorough dynamic and static testing regime, the end result is a highly functional product with an impressive strength to weight ratio.

GENERIC FEATURES

- Rounded edges to cheekplates maintain low rope abrasion when rope is fed 'unfair'
- Fairlead flares help maintain high working efficiency
- Thrust surfaces increase tolerance to external loading of spindle and anchor pin
- Lightweight attachment sling facilitates hauling of block, sling and rope to the climber and helps with handling, in tree stowage and workshop storage
- Direct connection to cordage, the anchor slings helps ensure correct neighbour component compatibility
- High efficiency oilite bushings to reduce friction
- Colouring follows EU WLL protocol
- Individual serial marking
- Made in Wales, UK

SUGGESTED AREAS OF APPLICATION

- Tree care – dismantling operations
- Forestry – winching operations
- Rescue

Guidance specific to tree 'dismantling operations' can be found in at www.treemagineers.com

TECHNICAL SPECIFICATIONS

- CE certification to European Machinery Regulations 2005
- Hot forged cheek plates in 6082-T6 aluminium for high strength to weight ratio
- CNC machined from 6082-T6
- Anodised to EN-795B-1:2001 Class 10E1 for corrosion protection
- Stainless Steel 303 hollow spindle
- Stainless Steel 303 anchor pin
- Efficient and robust Bronze bushings
- 6082-T6 sheaves

PERFORMANCE

- IMB - S
Minimum breaking strength [MBS]: TBC
Working Load Limit [WLL]: 40 kN
Maximum rope diameter: 16 mm
- IMB - L
Minimum breaking strength [MBS]: TBC
Working Load Limit [WLL]: 60 kN
Maximum rope diameter: 20 mm

DMM PROFESSIONAL