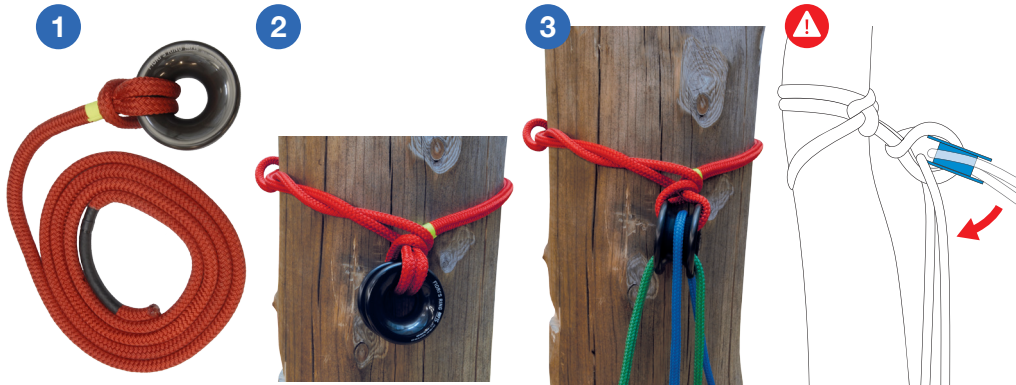


7 INSTRUCTIONS FOR USE

SET UP WITH 1 ROPE

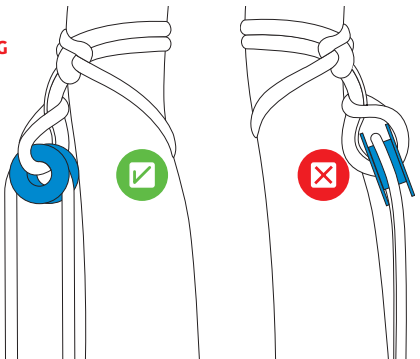


SET UP WITH 2 ROPES

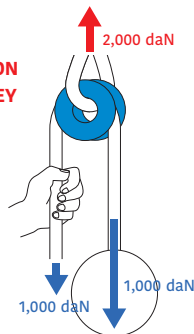


WARNING
This ring must be used for vertical rigging, in the axis of the ring in order to avoid improper position of ropes - with a tension angle that is too wide.

PAY ATTENTION TO THE PROPER POSITIONING OF THE RING
(ease of movement)



PAY ATTENTION TO THE PULLEY EFFECT



INSTRUCTIONS FOR USE AND MAINTENANCE

FIORI'S RING

RIGGING RING

REF.

FTC/R52

SERIAL NO.

JUNE 2017 VERSION (TRANSLATED)



FTC
PLAY WITH GRAVITY

1355, chemin de Malombre
26 780 MALATAVERNE • FRANCE
(+33) 475 528 640 • contact@ftc-tree.com
www.ftc-tree.com

1 TECHNICAL DATA

Weight	1 kg
Minimum Breaking Strength (MBS)	30,000 daN
Working Load Limit (WLL)	6,000 daN
Groove	U groove
Maximum recommended rope diameter	26 mm
MATERIAL	
Ring	Aluminium



DO NOT USE WITH WIRE ROPE! DO NOT USE FOR BELAYING!



2 PRODUCT DESCRIPTION

- Low friction ring

3 USE

This ring is intended for tree care (felling, dismantling, etc.). It must be used:

- With equipment (ropes, slings etc.) having the same size and resistance properties.
- By competent people trained in tree care (felling, dismantling, etc.).
- In respect of the manufacturer's and/or seller's recommendations.
- Only after having read and understood these instructions.

4 TRANSPORT / CARE / STORAGE

4.1 • TRANSPORT / STORAGE

Shocks and other poor treatment can weaken the material and cause serious, and even invisible, damage. During transport and use, take the necessary precautions. In a dry place, free from exposure to weather; shocks; heat sources more than 40°C; and abrasive, acidic or corrosive materials capable of damaging it and/or reducing its technical performance. Ropes soiled by dirt, sand, oil, etc., can cause a higher risk of wear to the pulley and lower pulley performance.

4.2 • CLEANING / CARE

- Clean water less than 40°C, clean cloth, mild detergent

5 RECOMMENDATIONS BEFORE USE

5.1 • READ THE INSTRUCTIONS

FTC Instructions (download the **FTC Instructions** at www.ftc-tree.com).

If you have any questions or need additional information, contact your seller.



5.2 • INSPECT BEFORE AND DURING USE

- Competence of users (trained in tree care and especially in felling, dismantling, etc.)
- Existence of an emergency rescue plan.
- Respect of the instructions and recommendations of use
- All labels are in place.
- General working state of the ring.
- Rigging rope(s) is/are properly positioned within the sheave's groove.
- Solidness of the chosen support.
- Compatibility and resistance of the rigging ropes and slings.



NEVER USE IF ANY ONE OF THESE FACTORS IS NOT RESPECTED.

6 MARKING

